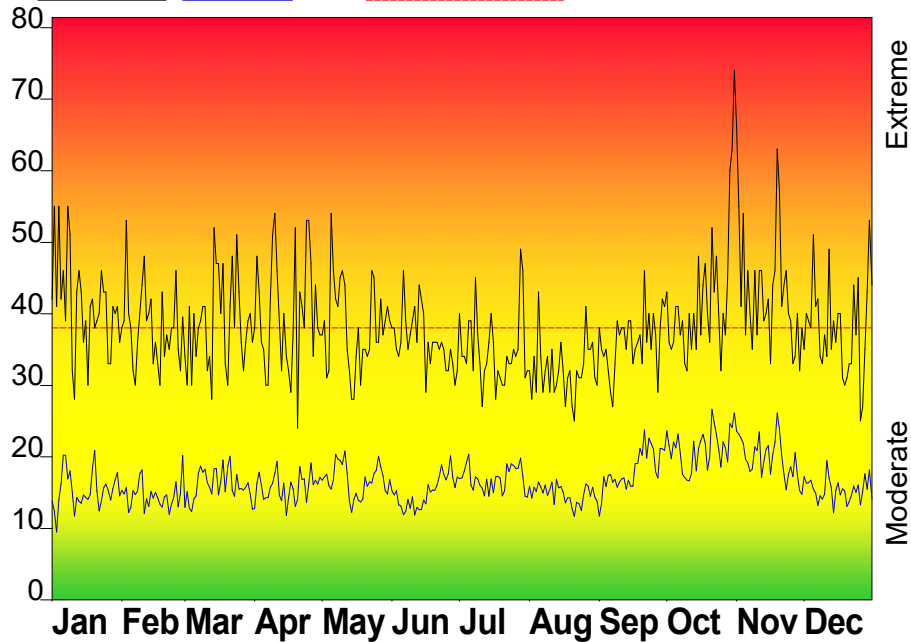


FIRE DANGER -- Louisville Station

Maximum, Average, and 97th Percentile, based on 21 years data



Fire Danger Area:

- Louisville Station
- Area 5
- * Meets NWCG Wx Station Standards

Fire Danger Interpretation:

- EXTREME** -- Use extreme caution
- High** -- Watch for change
- Moderate** -- Lower Potential, but always be aware

Maximum -- Highest Burning Index by day for 2003 - 2023

Average -- shows peak fire season over 21 years (7142 observations)

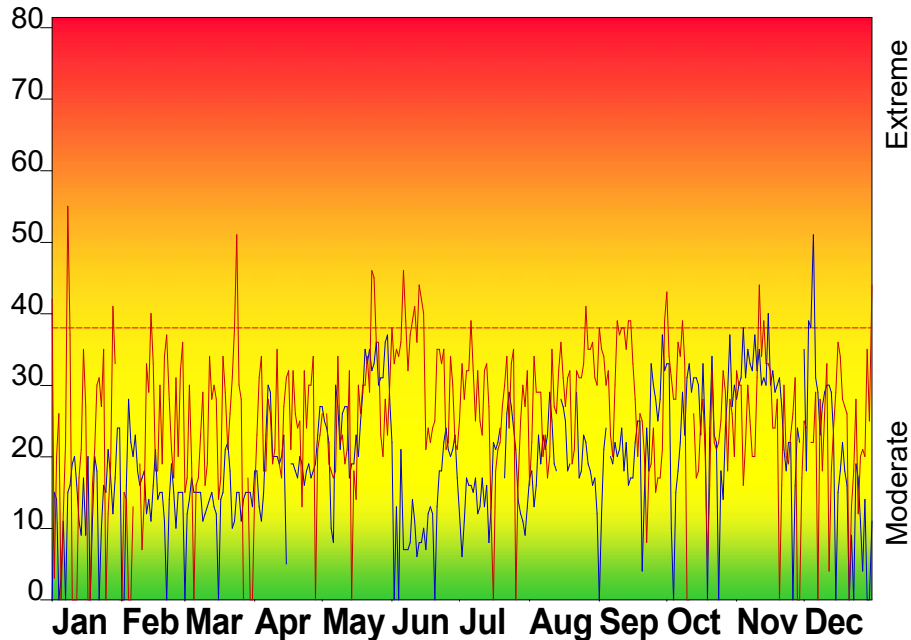
97th Percentile -- 3% of the 7142 days from 2003 - 2023 had an Burning Index above 38

Local Thresholds - Watch out:

Combinations of any of these factors can greatly increase fire behavior:

20' Wind Speed over 15 mph, **RH** less than 30%, **Temperature** over 90, **Keetch-Byram Drought Index** over 550

Years to Remember: 2007 2011



Remember what Fire Danger tells you:

- ✓ Burning Index gives day-to-day fluctuations calculated from temperature, humidity, wind, daily temperature & rh ranges, and precip duration.
- ✓ Wind is part of BI calculation.
- ✓ Watch local conditions and variations across the landscape -- Fuel, Weather, Topography.
- ✓ Listen to weather forecasts -- especially WIND.

Past Experience:

- *Green fuels are very volatile and burn readily
- *Some fuels are ready to burn within <1 hour after a rainfall
- *Sandy soils found here require 4-wheel drive vehicles

*Problematic fire behaviors is likely where ERC > 65, BI >85 Dispersion Index >70, Mixing Height > 5000'

Responsible Agency: GFC

FF+5.0 build 20230303 03/09/2023-16:47 (C:\Us...\2023-03-06-WIMSDB-GFC)

Design by NWCG Fire Danger Working Team

Fuel Model: C - Pine-Grass Savanna