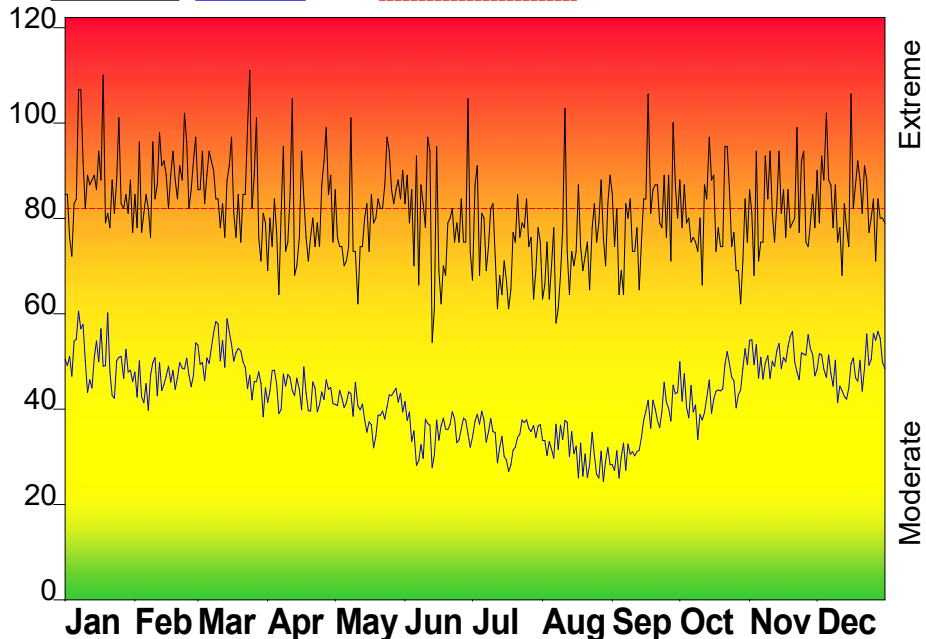


FIRE DANGER -- Midway Station

Maximum, Average, and 97th Percentile, based on 21 years data



Fire Danger Area:

- Midway Station
- Area 8
- * Meets NWCG Wx Station Standards

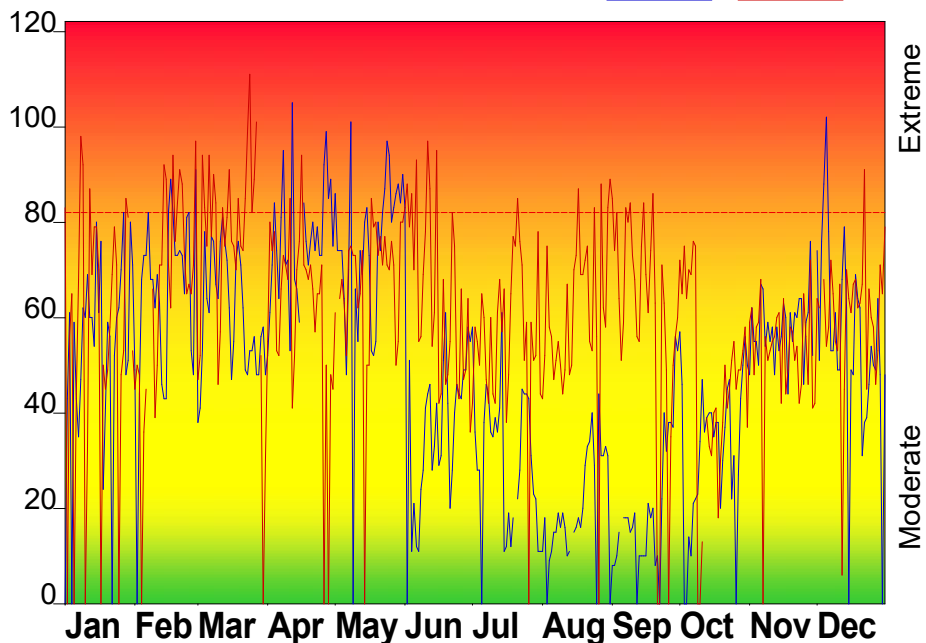
Fire Danger Interpretation:

- EXTREME** -- Use extreme caution
- High** -- Watch for change
- Moderate** -- Lower Potential, but always be aware

Maximum -- Highest Burning Index by day for 2003 - 2023
 Average -- shows peak fire season over 21 years (7157 observations)
 97th Percentile -- 3% of the 7157 days from 2003 - 2023 had an Burning Index above 82

Local Thresholds - Watch out: Combinations of any of these factors can greatly increase fire behavior:
20' Wind Speed over 15 mph, **RH** less than 30%,
Temperature over 90, **Keetch-Byram Drought Index** over 550

Years to Remember: 2007 2011



Fuel Model: D - Southern Rough

Remember what Fire Danger tells you:

- ✓ Burning Index gives day-to-day fluctuations calculated from temperature, humidity, wind, daily temperature & rh ranges, and precip duration.
- ✓ Wind is part of BI calculation.
- ✓ Watch local conditions and variations across the landscape -- Fuel, Weather, Topography.
- ✓ Listen to weather forecasts -- especially WIND.

Past Experience:

- *Atlantaic and Gulf Sea breezes can bring unexpected thunderstorms and can significantly impact fire behaviors
 - *Green fuels are very volatile and burn readily
 - *Some fuels are ready to burn within <1 hour after a rainfall
 - *Sandy soils found here require 4-wheel drive vehicles
- *Problematic fire behaviors is likely where ERC > 65, BI >85 Dispersion Index >70, Mixing Height > 5000'