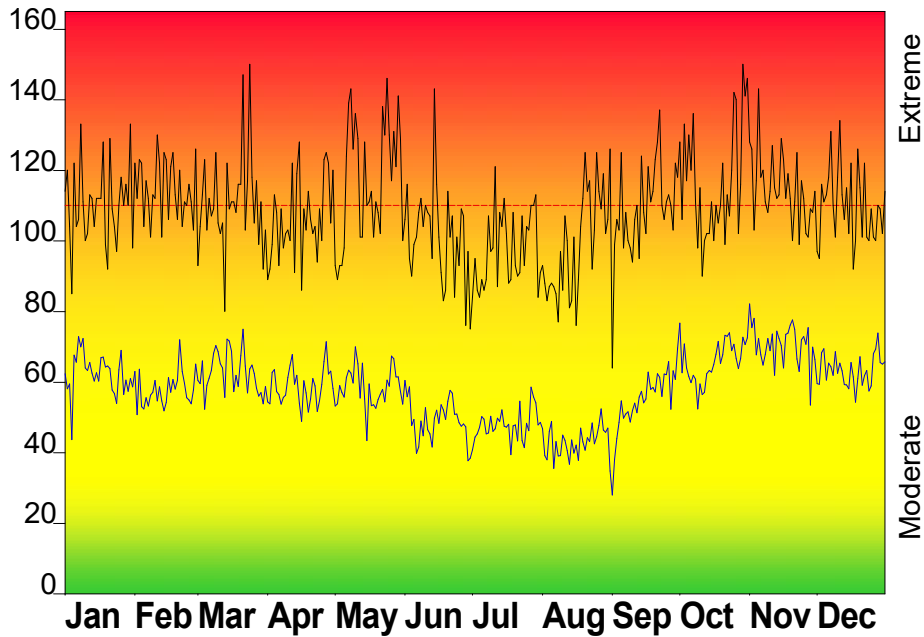


## FIRE DANGER -- Waycross Station

Maximum, Average, and 97th Percentile, based on 21 years data



## Fire Danger Area:

- Waycross Station
- Area 10
- (Weather Station)
- \* Meets NWCG Wx Station Standards

## Fire Danger Interpretation:

- EXTREME** -- Use extreme caution
- High** -- Watch for change
- Moderate** -- Lower Potential, but always be aware

Maximum -- Highest Burning Index by day for 2003 - 2023

Average -- shows peak fire season over 21 years (7167 observations)

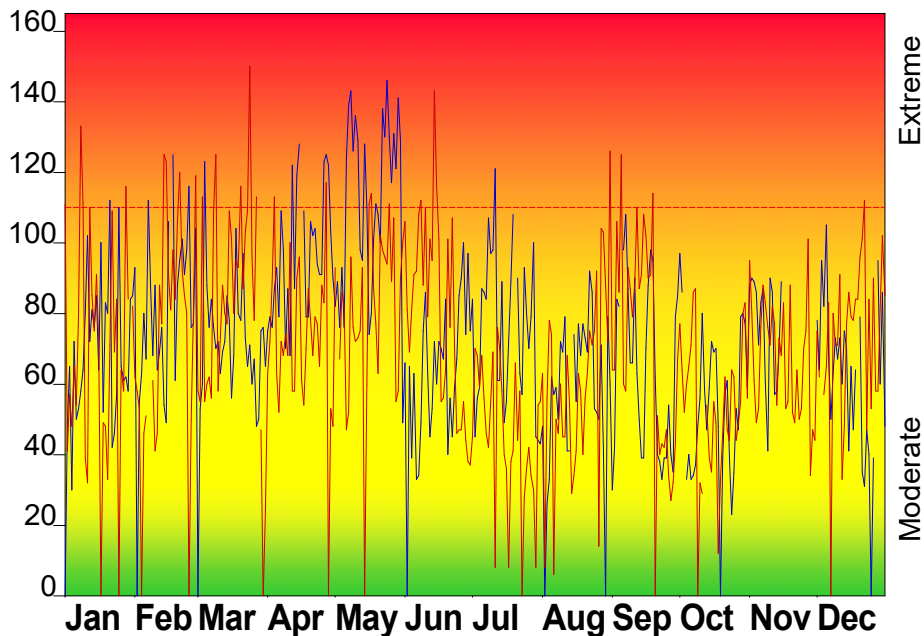
97th Percentile -- 3% of the 7167 days from 2003 - 2023 had an Burning Index above 110

## Local Thresholds - Watch out:

Combinations of any of these factors can greatly increase fire behavior:

- 20' Wind Speed** over 15 mph, **RH** less than 30%, **Temperature** over 90, **Keetch-Byram Drought Index** over 550

## Years to Remember: 2007 2011



**Fuel Model: D - Southern Rough**

## Remember what Fire Danger tells you:

- ✓ Burning Index gives day-to-day fluctuations calculated from temperature, humidity, wind, daily temperature & rh ranges, and precip duration.
- ✓ Wind is part of BI calculation.
- ✓ Watch local conditions and variations across the landscape -- Fuel, Weather, Topography.
- ✓ Listen to weather forecasts -- especially WIND.

## Past Experience:

- \*Green fuels are very volatile and burn readily
- Atlantic and Gulf Sea breezes can bring unexpected thunderstorms and can significantly impact fire behaviors
- \*Some fuels are ready to burn within <1 hour after a rainfall
- \*Sandy soils found here require 4-wheel drive vehicles
- \*Problematic fire behaviors is likely where ERC > 65, BI >85 Dispersion Index >70, Mixing Height > 5000'

Responsible Agency: GFC

FF+5.0 build 20230303 03/09/2023-15:41 (C:\Us...\2023-03-06-WIMSDB-GFC)

Design by NWCG Fire Danger Working Team